

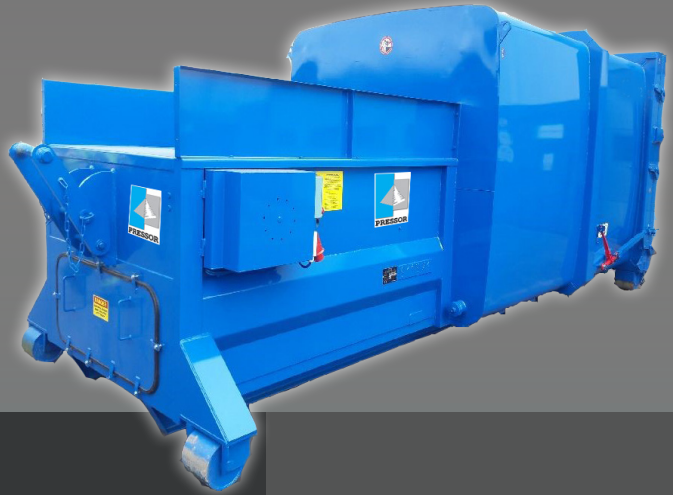
PRESSOR

PT 12-15-20-24

COMPACTOR

VERSATILE MOBILE COMPACTORS FOR NUMEROUS APPLICATION AREAS

Convenient fully automated waste compaction solution. The mobile compactors are easy to relocate within your premises. They take up about the same space as a standard container, yet provide powerful compaction and can hold up to 6 times more material. Our compactors are available in the volume range 12-24 m³.



Automatic solution



30 m³/HOUR
CAPACITY (UP TO)
CARDBOARD

Optimal features

WELL PROVEN TECHNOLOGY

reliable and sturdy compactors; design and production based on long experience

SMALL FOOTPRINT

compact machine design for placement where the space is limited

EASY ACCESS TO VITAL PARTS

for service and maintenance

SAFETY LOCKING SYSTEM

on the back door

FULL BIN INDICATOR

light flashes when the bin is 3/4 full

HOUR COUNTER & ELECTRIC OIL LEVEL SENSOR



Benefits for you

- + Reduction of transportation costs
- + Optimal use of transport capacity
- + Increased productivity thanks to the automated process
- + Efficient and convenient waste handling for the staff and a clean working environment

PRESSOR

PT 12-15-20-24



IDEAL FOR INDUSTRIAL AND COMMERCIAL WASTE

Our mobile compactors have many application areas and are ideal for industrial and commercial waste such as paper, cardboard, plastic and dry to semi-dry mixed waste.

For wet waste, we offer a special application, model PHGT 15-18-20, with leak-proof design.

OPTIONS

- + REMOTE CONTROL
- + BIN LIFTER
- + COOLING & HEATING SYSTEMS
- + HOPPERS
- + OZONE GENERATOR
- + WALL CONNECTION
- + RAL COLOUR OF YOUR CHOICE

Numerous adaptations and more options on demand

PORTABLE UNIT

The entire unit is portable. It rests on two reinforced beams for maximum stability during the loading and unloading of the compactor.

SAFETY ENSURED

The safety of the main components of the compactor is enhanced by safety locking devices, an electric oil level sensor and a hose protection by two steel braids. Our equipment conforms to the safety standards CE, AFNOR and INRS.

DIMENSIONS & SPECIFICATIONS

DIMENSIONS (mm)

	PT 12	PT 15	PT 20	PT 24
Length	5775	5775	6535	6992
Width	2408	2408	2408	2408
Height	2318	2618	2618	2618

TECHNICAL DATA

MODEL	PT 12	PT 15	PT 20	PT 24
Container volume (m³)	12	15	20	24
Loading aperture (mm)	1300x1550	1300x1550	1300x1500	1300x1500
Loading height (mm)	1595	1595	1595	1595
Infeed capacity (m³)	2	2	2	2
Press force (t)	28	28	28	28
Motor (kW / Hp)	5.5	5.5	5.5	5.5
Surface pressure (kg/cm²)	3.3	3.3	3.3	3.3
Cycle time (s)	30	30	30	30
Hydraulic oil quantity (L)	60	60	60	60
Total machine weight (kg)	3900	4200	4500	4900
Operating power*	3x400 V	3x400 V	3x400 V	3x400 V

We reserve the right to make changes to specifications without prior notice. * Other voltages are available on demand